

4423 104th Ave SE,  
Litchville, ND 58461

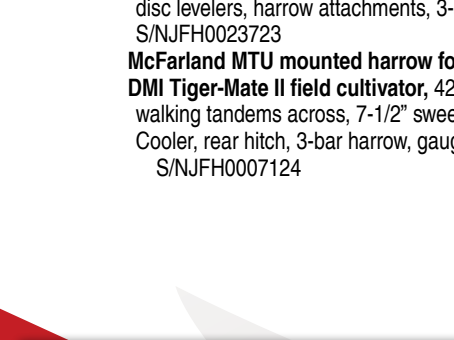
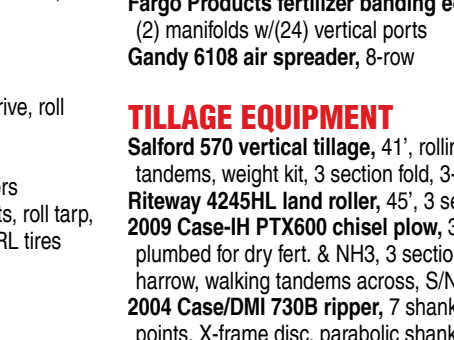
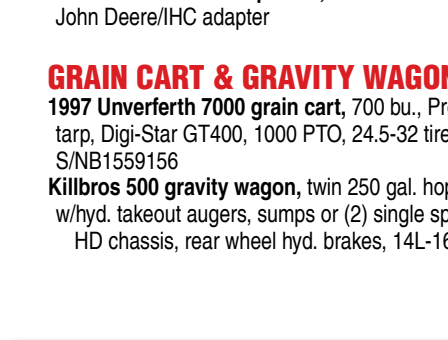
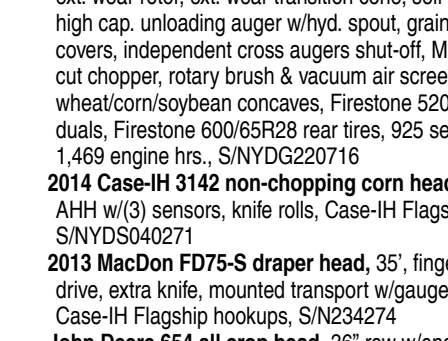
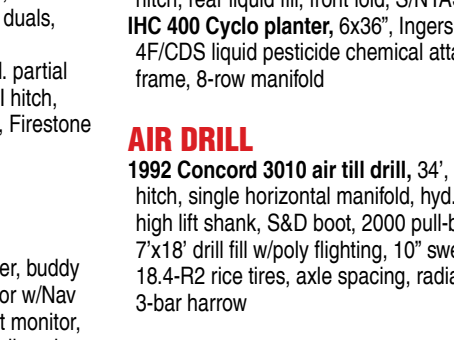
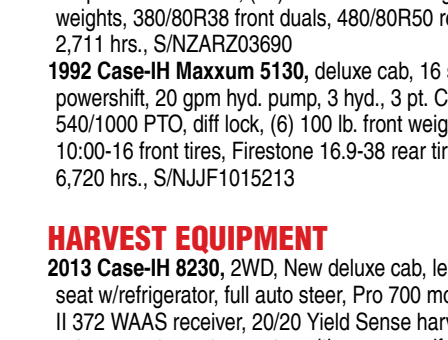
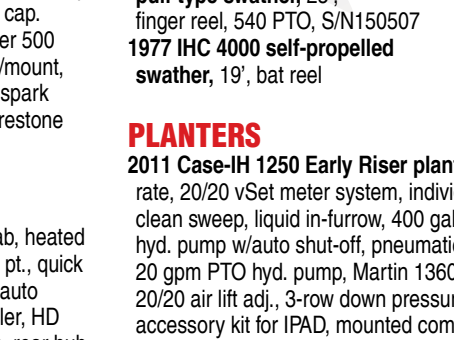
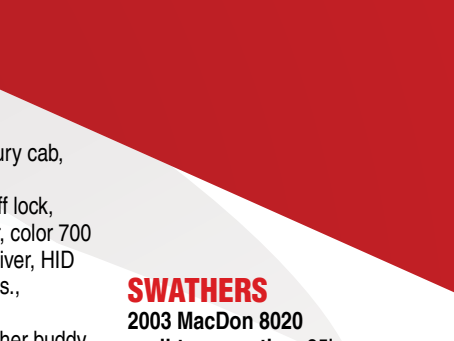
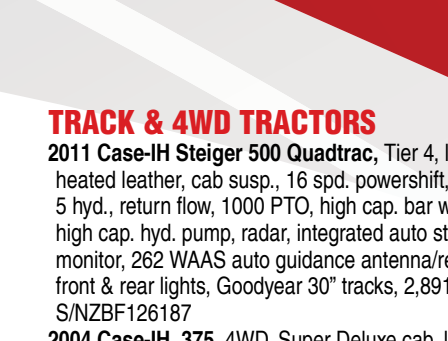
# Farm Retirement AUCTION

TIMED ONLINE

OPENS: TUESDAY, OCTOBER 26

CLOSES: TUESDAY, NOVEMBER 2 | 10AM

PREVIEW: Tuesday, October 19 – Tuesday, November 2  
LOADOUT: All items to be removed within two weeks of auction closing.



### TRACK & 4WD TRACTORS

**2011 Case-IH Steiger 500 Quadtrac**, Tier 4, luxury cab, heated leather, cab susp., 16 spd. powershift, 5 hyd., return flow, 1000 PTO, high cap. bar w/diff lock, high cap. hyd. pump, radar, integrated auto steer, color 700 monitor, 262 WAAS auto guidance antenna/receiver, HID front & rear lights, Goodyear 30" tracks, 2,891 hrs., S/NZBF126187

**2004 Case-IH 375**, 4WD, Super Deluxe cab, leather buddy seat, 16 spd. powershift, 4 hyd., return flow, high cap. pump, 4-spool electro hyd., std. drawbar, EZ-Steer 500 guidance system, ICU w/performance monitor w/mount, electric mirrors, strobe light, cold start pkg., non-spark muffler, weight pkg., (14) 100 lb. rear weights, Firestone 710/70R42 duals, 3,677 hrs., S/NJEE0104850

### MFWD & 2WD TRACTORS

**2010 Case-IH MX305 Magnum MFWA**, luxury cab, heated leather, buddy seat, 18 spd. powershift, 4 hyd., 3 pt., quick tach, high cap. hyd. pump, (3) PTO's, integrated auto steer, Pro 600 monitor, 262 receiver, Nav controller, HD suspended front axle, (18) front suitcase weights, rear hub weights, 380/80R38 front duals, 480/80R50 rear duals, 2,711 hrs., S/NZARZ03690

**1992 Case-IH Maxxum 5130**, deluxe cab, 16 spd. partial powershift, 20 gpm hyd. pump, 3 hyd., 3 pt. Cat II hitch, 540/1000 PTO, diff lock, (6) 100 lb. front weights, Firestone 10.00-16 front tires, Firestone 16.9-38 rear tires, 6,720 hrs., S/NJUF1015213

### HARVEST EQUIPMENT

**2013 Case-IH 8230**, 2WD, New deluxe cab, leather, buddy seat w/refrigerator, full auto steer, Pro 700 monitor w/Nav II 372 WAAS receiver, 20/20 Yield Sense harvest monitor, ext. wear rotor, ext. wear transition cone, self-leveling sieve, high cap. unloading auger w/hyd. spout, grain tank w/hyd. covers, independent cross augers shut-off, Magnacut fine cut chopper, rotary brush & vacuum air screen, (3) sets wheat/corn/soybean concaves, Firestone 520/85R straddle duals, Firestone 600/65R28 rear tires, 925 sep. hrs., 1,469 engine hrs., S/NYDG220716

**2014 Case-IH 3142 non-chopping corn head**, 12x30", AHH w/(3) sensors, knife rolls, Case-IH Flagship hookups, S/NYDS040271

**2013 MacDon FD75-S draper head**, 35", finger reel, single drive, extra knife, mounted transport w/gauge wheels, Case-IH Flagship hookups, S/N234274

**John Deere 654 all crop head**, 36" row w/end side ext., John Deere/IHC adapter

### GRAIN CART & GRAVITY WAGON

**1997 Unverferth 7000 grain cart**, 700 bu., ProDrive, roll tarp, Digi-Star GT400, 1000 PTO, 24.5-32 tires, S/NB1559156

**Killbros 500 gravity wagon**, twin 250 gal. hoppers w/hyd. takeout augers, sumps or (2) single spouts, roll tarp, HD chassis, rear wheel hyd. brakes, 14L-16.1RL tires

### SWATHERS

**2003 MacDon 8020 pull-type swather**, 25', finger reel, 540 PTO, S/N150507  
**1977 IHC 4000 self-propelled swather**, 19', bat reel

### PLANTERS

**2011 Case-IH 1250 Early Riser planter**, 16x30", variable rate, 20/20 vSet meter system, individual row shut-off, clean sweep, liquid in-furrow, 400 gal. poly fertilizer tank, hyd. pump w/auto shut-off, pneumatic down pressure, 20 gpm PTO hyd. pump, Martin 1360 floating row cleaners, 20/20 air lift adj., 3-row down pressure sensors, Field View accessory kit for IPAD, mounted compressor, markers, rear hitch, rear liquid fill, front fold, S/NYAS007132  
**IHC 400 Cyclo planter**, 6x36", Ingersoll-Dresser FMC 4F/CDS liquid pesticide chemical attachment, poly tank & frame, 8-row manifold

### AIR DRILL

**1992 Concord 3010 air till drill**, 34", 10" space, floating hitch, single horizontal manifold, hyd. fan, 100 monitor, high lift shank, S&D boot, 2000 pull-behind seed cart, 7"x18" drill fill w/poly flighting, 10" sweeps, 3 bar harrow, 18.4-R2 rice tires, axle spacing, radial press wheels, 3-bar harrow

### SELF-PROPELLED SPRAYER

**2008 Apache AS1010 self-propelled sprayer**, 2WD, 90' boom, 20" spacing, 5-section shut-off, Hypro pump, triple nozzle bodies, 1,000 gal. poly tank, New Holland 750 GPS, Raven SCS 5000 monitor, 380/80R38 front tires, 380/90R46 rear duals, 1,285 hrs., S/N909-4453

### FERTILIZER SPREADER & FERTILIZER EQUIPMENT

**2012 Willmar Super 500 tandem axle fertilizer spreader**, 50 ton, 50' spread, dual rear spinners, 540 PTO, S/NACCH500YNH001004  
**Fargo Products fertilizer banding equipment**, (2) manifolds w/(24) vertical ports  
**Gandy 6108 air spreader**, 8-row

### TILLAGE EQUIPMENT

**Salford 570 vertical tillage**, 41', rolling baskets, walking tandems, weight kit, 3 section fold, 3-bar harrow, S/N7314  
**Riteway 4245HL land roller**, 45', 3 section, S/N03-526  
**2009 Case-IH PTX600 chisel plow**, 38", floating hitch, plumbed for dry fert. & NH3, 3 section fold, Summers 3-bar harrow, walking tandems across, S/NY9S003890

**2004 Case/DMI 730B ripper**, 7 shank, 30" space, 10" points, X-frame disc, parabolic shanks w/8" cover boards, disc levelers, harrow attachments, 3-section fold, S/NJFH0023723

**McFarland MTU mounted harrow for 730B coulters ripper**  
**DMI Tiger-Mate II field cultivator**, 42-1/2', 5-section fold, walking tandems across, 7-1/2" sweeps, Raven NH3 Super Cooler, rear hitch, 3-bar harrow, gauge wheels, S/NJFH0007124

### Case-IH RM370

**tandem disc**, 34', coulters center breaker, walking tandems, mud scrapers, Summers 3-bar harrow, S/NJFH0041424  
**Hesston 2410 single disc**, 40', rear fold, S/N306  
**IHC 710 auto reset moldboard 7 bottom plow**, (7) coulters  
**Summers harrow**, 60', 5-bar, (20) down pressure springs, S/N94772  
**IHC 8-30 vibrashank cultivator**

### SEMI TRACTOR & TRUCKS

**1995 Freightliner FLD120 tandem axle day cab**, M11 Cummins, Eaton 9 spd., engine brake, air ride, air slide 5th, diff lock, cruise, 295/75R22.5 tires on aluminum, 653,199 miles  
**1980 Ford 7000 Louisville tag tandem**, 3208 Cat, 5&2 spd., 20' Dakota steel box, spring ride, poly box floor, roll tarp, 10.00R20 tires, 93,160 miles  
**1978 Chevrolet C65 Scottsdale tag tandem**, 366 CID engine, 5&2 spd., 19' Buffalo box, HD hoist, spring ride, roll tarp, 10.00-20 tires, 36,929 miles  
**1968 Ford F700 single axle**, 360 CID engine, 4&2 spd., spring ride, flat bed w/grain walls, includes 1,600 gal. vertical poly tank, 65 gal. mix cone, Honda transfer pump, 8.25-20 tires

### HOPPER BOTTOM TRAILER

**2000 Timpit Super Hopper tandem axle hopper bottom**, 40'x96'x66", ag hopper, roll tarp, spring susp., 11R22.5 tires on steel

### CAR TRAILER

**PJ tandem axle car trailer**, 20'x86", folding ramps, wood deck, 2-5/16" ball hitch

### NH3 & CHEMICAL EQUIPMENT

**1991 P&H 2801-AW1 NH3 nurse tank**, 1,000 gal., S/N84-103  
**Raven NH3 applicator kit & monitor**  
**NH3 knives & Metermatic control meter**  
**NH3 torpedo hitch**, hyd. control winch  
**NH3 track buster**  
**Chemical tank 3088 seed treater**, soybeans & small grain, regulator

### SEED TENDER

**D&F ST250BU seed tender**, CMC 250 bu. twin compartment, swinging unloading conveyor, roll tarp, no spill spout, Digi-Star EZ400 scale, Honda GX270 gas motor, S/N102351

### HOPPER BIN, GRAIN HANDLING & AERATION EQUIPMENT

**2011 Meridian FR1620 hopper bin**, 4,100 bu., 16' skid, air duct & screen, (3) sight glasses, S/N6220100229616  
**DMC 54 rotary grain cleaner**, 2-1/2"x2-1/2" inside screens, 6"x6" outside screens, soybean/corn screens  
**Kwik Kleen 572 grain cleaner**, 5 tube, electric screenings auger, 5 hp., top cover with fan opening, wheat & barley screens

**Spread-All air grain cleaner w/wheat scab & insect cleaner**

**2011 Wheatearth SA1381 unloading auger**, 81'x13", hyd. lift, w/Wheatheart hyd. swing away, hopper walker, spout & tarp, 540 PTO

**2014 Brandt 852 Supercharged loadout auger**, 52'x8", 540 PTO, no spill spout

**Westfield J207-51 loadout auger**, 51'x7", 10 hp. electric motor, S/N107239

**Brandt 735 auger**, 35'x7", Kohler 16 hp. electric start engine, Wheatheart bin sweep, down spout

**2002 Brandt GrainBelt 1575 belt conveyor**, 75'x15", hyd. lift, PTO, grain spout, S/N107483

**2003 Brandt 1515LP hyd. jump conveyor**, 15'x15", custom swing away bracket, S/N70580-B2  
**Batco 1335TD belt conveyor**, standard hopper, electric drive, S/N13124  
**(2) David Mfg. 918 bin spreaders**, auto control Flat storage aeration tubes, 3 hp. fans

### ROCKPICKERS

**2005 Big Otto rockpicker**, 16.5-16.1SL tires  
**Crown rockpicker**, hyd. 3 bat reel, 14L-16.1 tires, S/N15672  
**Haybuster 106 hyd. windrow rockpicker**, low dump  
**Leon fork-style rockpicker**

### OTHER EQUIPMENT

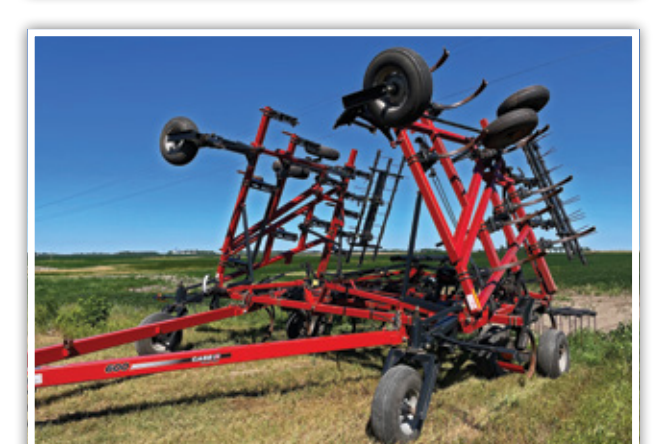
**1995 Reiten pull-type box scraper**, 12'  
**2017 Woods BW1800 batwing mower**, 15', 1000 PTO, safety chains  
**Farm King 9600 snowblower**, 8', twin auger, hyd. swing spout, 3 pt., 540 PTO, S/N9042123  
**Du-AI 320 loader w/grapple fork**, International 4,000 lb. forklift attachment

### TANKS

**2015 True North Steel 8,500 gal. double wall fuel tank** w/25 gpm pump  
**O'Day 125 gal. field service tank**, w/15 gpm 12v pump  
**(2) 3,000 gal. vertical poly tanks**

### PARTS

**2019 Flexifinger crop lifters**  
**May Wes auger hopper**  
**TeaJet 844 Pro sprayer controller w/5-boom shut-offs**  
**Tow brackets & cables/shackles**, fits Case-IH combines  
**Flagship & 88 Series adapters**  
**Grain pickup guards**



701.237.9173 | SteffesGroup.com  
Steffes Group, Inc., 2000 Main Avenue East, West Fargo, ND 58078



TERMS: All items sold as is where is. Payment of cash or check must be made sale day before removal of items. Statements made auction day take precedence over all advertising. \$35 documentation fee applies to all titled vehicles. Titles will be mailed. Canadian buyers need a bank letter of credit to facilitate border transfer. Scott Steffes ND81, Brad Olstad ND319, Max Steffes ND999, Justin Ruth ND2019

Don & Terry Berge  
Don, 701.361.7641  
or Justin Ruth at Steffes Group, 701.237.9173 or 701.630.5583